



Tel/Fax: +7 (800) 100-1237  
 E-mail: [svarog@svarog-uv.ru](mailto:svarog@svarog-uv.ru)

## "LAZUR M-30". TECHNICAL DATA

| <b>2.1. Quality indicators of the feed water:</b>                            | <b>Drinking / Waste water*</b> |
|--|--------------------------------|
| 2.1.1. Suspended solids, mg/l, no more than                                  | (1)* / 10                      |
| 2.1.2. UV Transmittance at 254 nm for 10-mm water column, %                  | (85)* / 60                     |
| 2.1.3. Colour, degree, no more than  | (20)* / 50                     |
| 2.1.4. Turbidity, NTU, no more than  | (1÷2)* / 3                     |
| 2.1.5. Iron content, mg/l, no more than                                      | 0,3                            |
| 2.1.6. Temperatures of water under treatment and of ambient air, °C          | +4 ÷ +30                       |
| 2.1.7. Total Bacteria Count in 1 litre, no more than                         | (1000)* / 5...10 <sup>6</sup>  |
| 2.1.8. Coliphages, no more than  | (100)* / 5...10 <sup>4</sup>   |
| <b>2.2. Quality indicators of the treated water:</b>                         |                                |
| 2.2.1. Total Bacteria Count in 100 ml, no more than                          | (50)* / 100                    |
| 2.2.2. Coliphages (MS2), in 100 ml, no more than                             | (absent)* / 100                |
| <b>2.3. Minimal dose of UV irradiation, not less than, mJ/cm<sup>2</sup></b> | <b>40 (65)**</b>               |
| <b>2.4. Nominal flowrate, m<sup>3</sup>/h</b>                                | <b>30</b>                      |
| <b>2.5. Minimal service life of UV lamps, hours</b>                          |                                |
| 2.5.1. UV – quartz lamps   | 8000                           |
| 2.5.2. UV – amalgam lamps  | 16000                          |
| <b>2.6. Minimal flow of water in the working system, l/hour</b>              | <b>130</b>                     |
| <b>2.7. Power source (AC) nominal, 50Hz</b>                                  | <b>220±10%</b>                 |
| <b>2.8. Maximum power consumption</b>  |                                |

|         |   |                  |
|---------|---|------------------|
| 2.8.1.  | With UV quartz lamp, kWh, no more than  | 0,6              |
| 2.8.2.  | With UV amalgam lamp, kWh, no more than   | 0,8              |
| 2.9.    | Minimal working pressure in the feeding water pipe $P_{\min}$ Atm                     | 0,2              |
| 2.10.   | Maximum working pressure in the feeding water pipe $P_{\max}$ Atm                     | 4,0              |
| 2.11.   | Pressure loss at nominal flow rate, meters of water column, less than                 | 0,15             |
| 2.12.   | Protection rating of the Control Panel  | IP55             |
| 2.13.   | Minimal time required to reach optimal working parameters, min                        | 5                |
| 2.14.   | Time required between switching off and switching on of the system, min, no less than | 10               |
| 2.15.   | Disinfection unit dimensions, mm  | 1300x200x250     |
| 2.16.   | Control panel dimensions, mm  | 600x400x250      |
| 2.17.   | Total weight of the system, kg  | 40               |
| 2.18.   | Photochemical reactor volume, litres  | 22               |
| 2.19.   | Feeding pipe diameter, depending on the PCR type:                                     |                  |
| 2.19.1. | PCR30.50  | G 2 1/2" outside |
| 2.19.2. | PCR30.100   | Ø100             |
| 2.20.   | Maximum noise level on A-weighting scale at a distance of 2 meters, no more than      | 78 dB            |

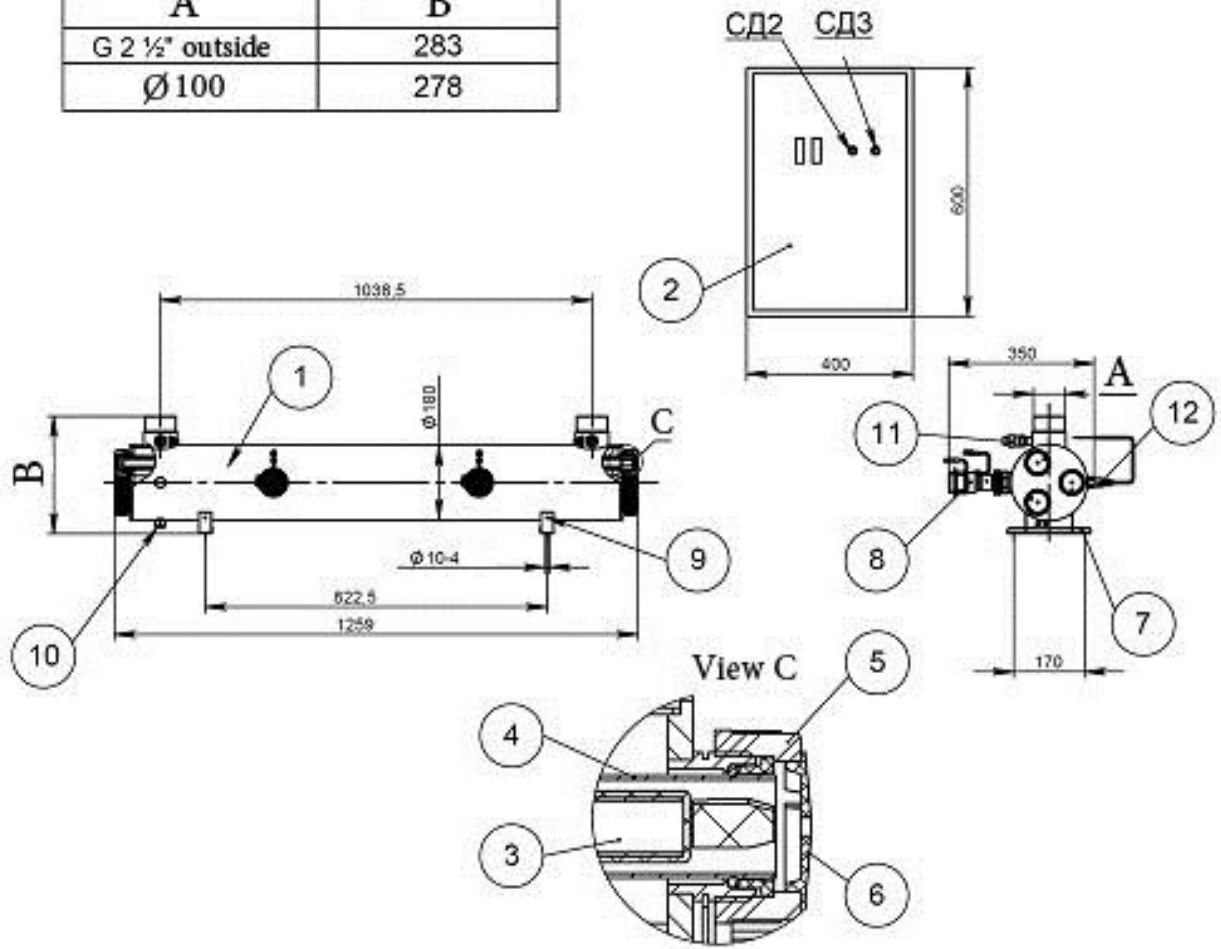
\*) In systems for drinking water disinfection

\*\*) In systems with amalgam lamps

### Figure 1. General view and set up plan for Lazur M-30 system

1. Photochemical Reactor; 2. Control Panel; 3. UV lamp;
4. Protective quartz sleeve; 5. Hermetic coupling; 6. Protective cap;
7. Support; 8. Ultrasound Emitter; 9. Earthing terminal;
10. Drain pipe; 11. Sampling Port; 12. UV monitor (optional);

| A                | B   |
|------------------|-----|
| G 2 1/2" outside | 283 |
| Ø 100            | 278 |



### Maintenance Area

