

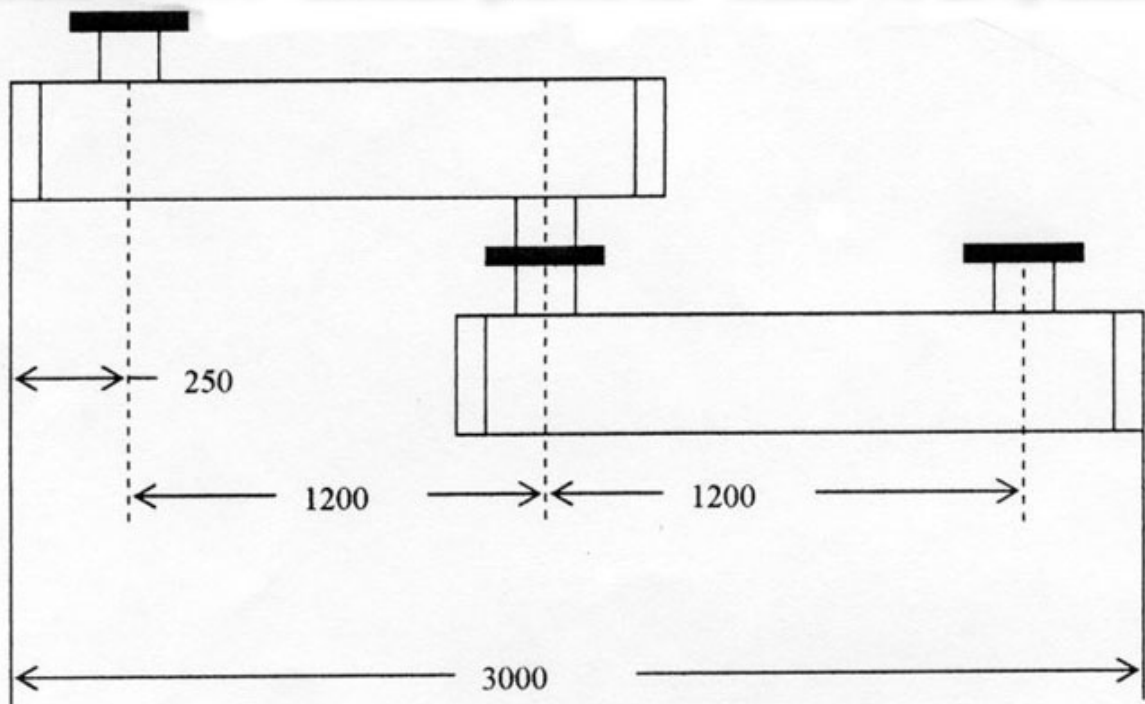
Station of Disinfecting Potable Water and Clarified Sewage for Capacity of over 72000 m³/day (over 3000 m³/h).

Description of station for disinfecting sewage.

The stations with the capacities over 3000 m³/h are built up on a basis of "Lazur M-500" units. The capacity of each "Lazur M-500" unit is up to 500 m³/h. When these modules are incorporated in a station, they are connected in parallel. Reasoning from the required water discharge, the station may be built up of one or several sections with "Lazur M-500" units connected in parallel. One of the modules in each section serves as reserve. The number of modules in a section must not exceed 10 sets

"Lazur M-500" represents two sections (each of 250 m³/h capacity) connected in parallel and having joint control and power supply. The modules make use of ultraviolet amalgam type lamps with electric power of 325 W (100W in UV radiation power).

"Lazur M-500" module (based on "Lazur M-250" units)



Dimensions of the module in assembly are as follows:

- diameter, 750 mm;
- length, 3.0 m;
- bore diameters of the inlet and outlet branch pipes, 250 mm

The power consumption is 14 kW.